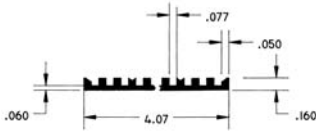


CCA13C/90 - Assembled Subrack with continuous guide plate.



VectorPak™ Continuous Guide Plate

Card Racks with Continuous Guide Plate allows card placement on 0.150" centers. Guide plates created from extruded 6063-T6 aluminum. 0.80" thick brushed aluminum side plates with clear irridite finish. Rear "T" Struts included for mounting of connectors (Vector P/N HD34).

| Part No. | Dimensions (H x W x D) | Description/ Installed |
|----------------------|---|------------------------------------|
| 2U Rack CCA10C/90 | Card height min. 0.75" to 2.75" max. X 6.5" L 2U (3.50") X 19.0" X 12.0" | Continuous guide plate, conductive |
| 3U Rack CCA13C/90 | Card height min. 2.50" to 4.50" max. X 6.5" L 3U (5.25") X 19.0" X 9.0" | Continuous guide plate, conductive |
| 4U Rack CCA14C/90 | Card height min. 4.25" to 6.25" max. X 9.6 L 4U (7.00") X 19.0" X 12.0" | Continuous guide plate, conductive |
| 5U Rack CCA15C/90 | Card height min. 6.00" to 8.00" max. X 9.6 L 5U (8.75") X 19.0" X 12.0" | Continuous guide plate, conductive |

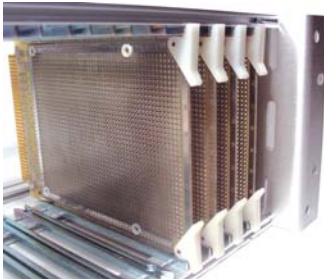


CCA14F/90 - Subrack frame only

VectorPak™ Card Frame Only

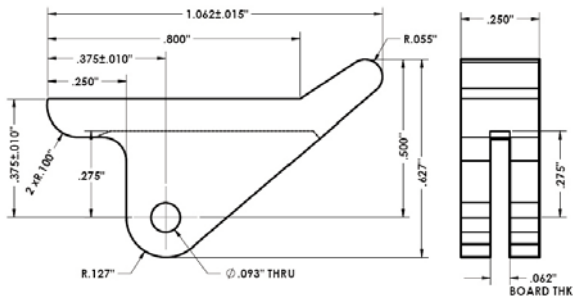
Card Rack Frame only, no card guides (guides sold separately). Will accept any VectorPak™ CG2-series card guide. More economical when only a few cards needed. Rear "T"-struts included for mounting of connectors (Vector P/N HD34).

| Part No. | Description/ Version Installed | Rack Outer Dimensions (H x W x D) | Kit |
|----------------------|--------------------------------|-----------------------------------|-----------|
| 2U Rack CCA10F/90 | Frame only | 2U (3.50") X 19" X 12" | CCK10F/90 |
| 3U Rack CCA13F/90 | Frame only | 3U (5.25") X 19" X 9" | CCK13F/90 |
| 4U Rack CCA15F/90 | Frame only | 4U (7.00") X 19" X 12" | CCK15F/90 |
| 5U Rack CCA17F/90 | Frame only | 5U (8.75") X 19" X 12" | CCK17F/90 |



Rotation Type Ejector Handle - HA9

ROTATION TYPE EJECTOR HANDLE - HA9



| Part No. | Pkg Qty |
|----------|---------|
| HA9/4 | 4 |
| HA9/C | 100 |

- Card ejector, corner mounting
- Supports up to 40 lbs extraction force
- White nylon, (hardware included)

Attractive & Extremely Rugged Benchtop/Desktop Outer Enclosures

SE1588
4U for 8.4"W Subrack



SE1322
3U x 22"D for 19"W Subrack

EIA Subracks

